



**STUBBE'S**  
PRECAST

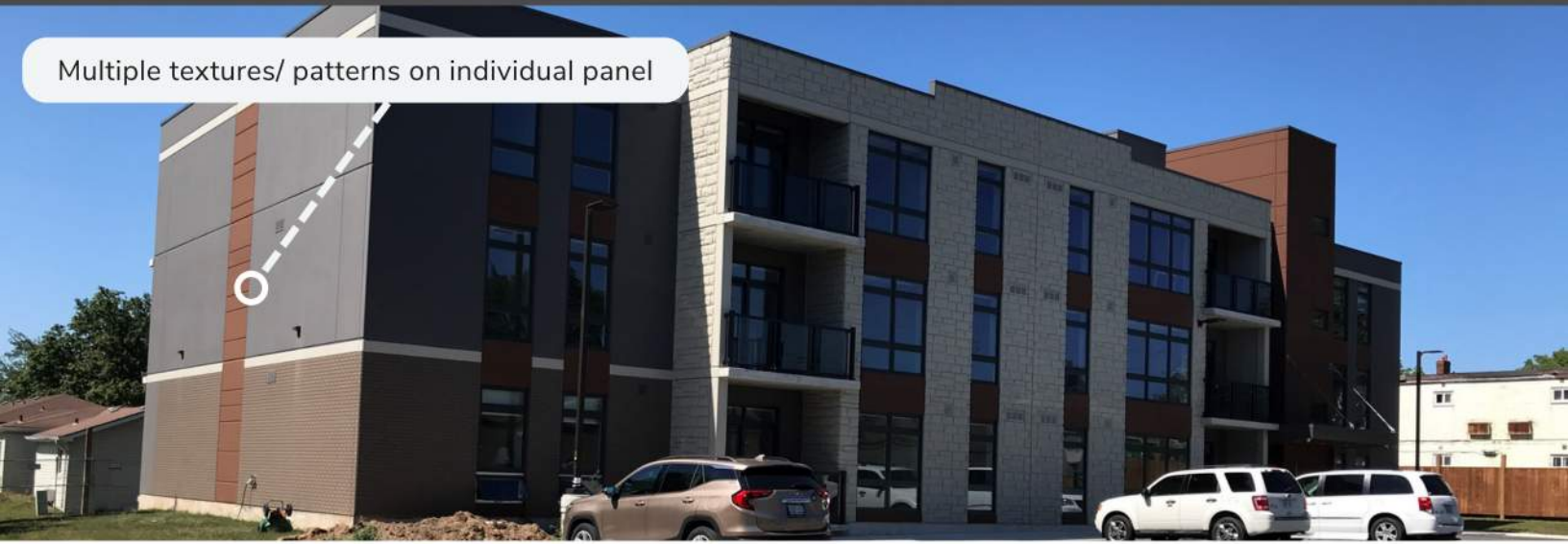
Family Owned.  
Professionally Run.



**Precast Wall Panels**

Additional colours & finishes available! Please contact us for the full guide.

Multiple textures/ patterns on individual panel



Multiple architectural finishes



Match to existing finishes



[www.stubbes.org](http://www.stubbes.org)



Up to R-40 insulation



- Roof system bearing on exterior wall
- The superior solution to tiltup

✓ Up to R-40 insulation

✓ STC rating of 58

✓ 2 stage caulking

✓ Interior float finish or power trowel

✓ Potential shear resistance (structural walls only)



- Free standing
- Load bearing wall

First coat of paint applied in factory



Second coat of paint applied on-site



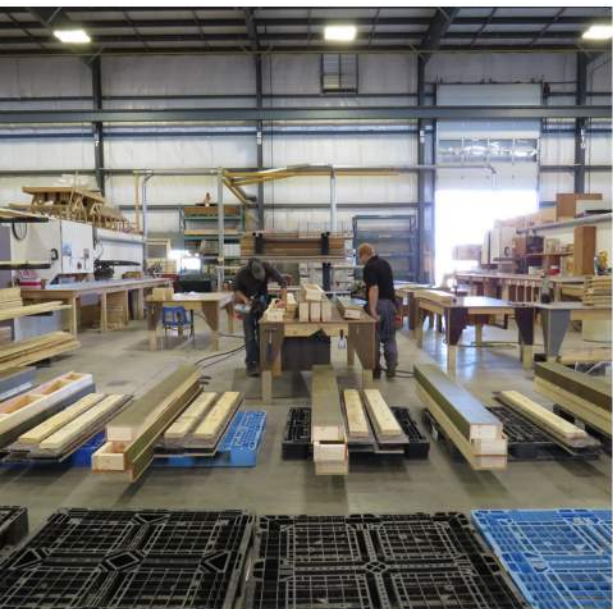
Faster enclosed buildings with windows installed at Stubbe's plant.



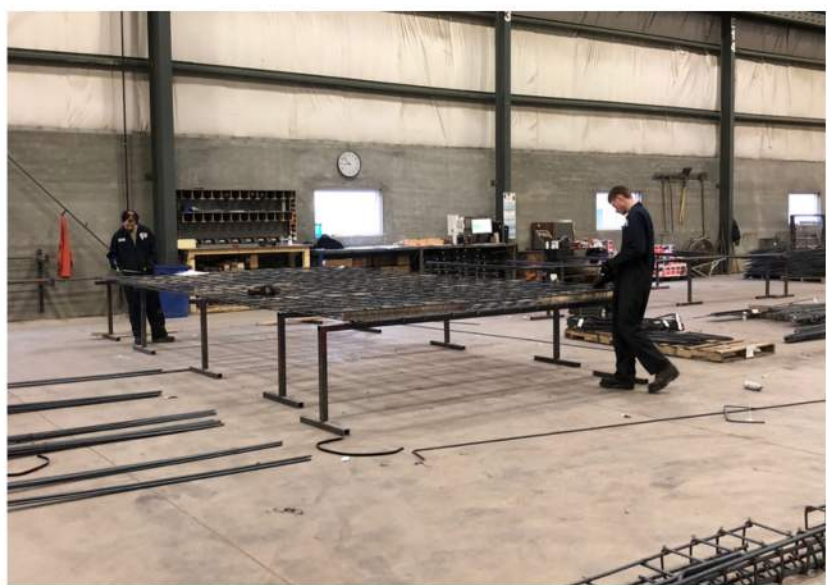
# Production



Plant #3 is one of the most modern facilities in North America.



Our precast manufacturing plants include over 340,000 sq. ft. on 175 acres in Southwestern Ontario.



# Finishes

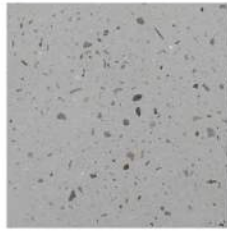
## Mold Liners, Coatings, and Stains



Micro Etch



Medium Sandblast  
White Cement



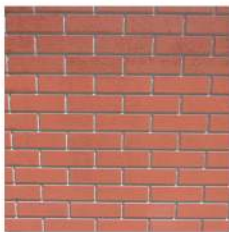
Heavy  
Sandblast



Exposed Aggregate  
White Cement



Split Face Block



Textured Face  
Brick



Multi Tonal  
Stone



Ashlar Stone



Reveals



Textured Paint



San Diego  
Fieldstone



Fluted Rib



Light Grain  
Cedar Wood



White  
Cement



Board & Batten

Available in any colour! Please contact us for your stain or paint options!

BASF Master Protect HB300SB

**Further precast finishes are being worked on today!**

**Contact us to learn more!**

## Accents/ Specialty





Production takes place at three state-of-the-art manufacturing plants with over 340,000 square feet of indoor production and support facilities on over 175 acres in South Western Ontario.

## A Family Company Built on Solid Values

Stubbe's was founded in 1982 by Herb Stubbe, when he designed and manufactured the first precast concrete hog feeders in Harley, Ontario. Over the years the company added multiple agricultural products including various types of bunk feeders, bunker silo walls and slats combined with structural posts and beams.

In 2001, Stubbe's entered the commercial and residential markets by introducing its hollowcore flooring system. This was followed by the introduction of structural wall panels in 2006. In 2010, Stubbe's added structural columns, beams and double tees to its product line. All these products are now combined to create Total Precast structures.



**STUBBE'S**  
PRECAST

**STUBBE'S PRECAST**  
44 Muir Line, Harley, NOE 1E0  
519-424-2183  
[estimating@stubbes.org](mailto:estimating@stubbes.org)